

Market : mai

INDUS : Industrial

Company Snapshot: 3M/2020

Updated at May 2020

CHOW

บริษัท เซอร์ สเตล อินดัสทรี จำกัด (มหาชน)
CHOW STEEL INDUSTRIES PUBLIC COMPANY LIMITED

Head Office : 2525 FYI CENTER BUILDING 2, 10th FL. UNIT 2/1006-1008, RAMA 4 ROAD, KHLONGTOEI, KHLONGTOEI, BANGKOK 10110

Contact : 0-2033-0901-8

Website : www.chowsteel.com

Anavin Jiratomsiri
Chairman of Executive Committee

Tel : 0-2033-0901-8
kelvin@chowsteel.com

Koo Man Wai
CEO

Tel : 0-2033-0901-8
mandykoo@chowsteel.com

Suppachai Yimsuwan
Vice President of Finance and Administration

Tel : 0-2033-0901-8
suppachai@chowsteel.com

CG Report Score :

THSI List : -

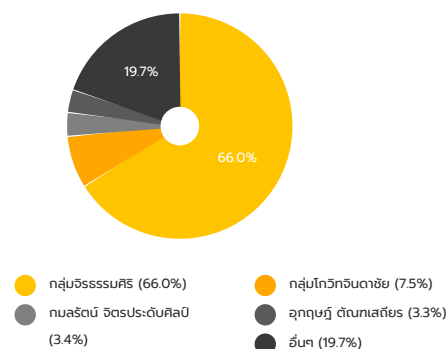
Stock Data (19/05/2020)

	YTD	2019	2018
Paid-up (MB.)	800.00	800.00	800.00
Listed share (M.)	1,040.00	1,040.00	1,040.00
Par (B.)	1.00	1.00	1.00
Market Cap (MB.)	944.00	1,152.00	3,248.00
Price (B./share)	1.18	1.44	4.06
EPS (B.)	-0.24	-0.25	-0.15

Statistics (19/05/2020)

	P/E	P/BV	Div.Yield
CHOW (x)	-	1.02	-
INDUS - mai (x)	29.26	1.03	3.77
INDUS - SET (x)	47.33	0.95	4.07
mai (x)	20.38	1.32	3.41
SET (x)	18.44	1.45	3.94

Shareholder Structure (30/12/2019)



Financial Ratios

	3M/2020	3M/2019	2019	2018
ROE (%)	-36.04	-1.45	-16.80	-8.90
ROA (%)	-0.07	4.35	1.99	2.53
D/E (x)	10.73	7.52	8.82	8.87
GP Margin (%)	17.15	11.28	18.04	8.85
EBIT Margin (%)	-52.09	21.22	15.04	7.55
NP Margin (%)	-92.08	1.41	-12.76	-2.83

Company Background

- Chow Steel Industries PCL. (CHOW) operates business of producing and selling steel billet to the domestic and foreign rolling mills for further rolling into Long Products by using steel melting technology of Electric Induction Furnace (EIF) with total production capacity of 730,000 tons per year.
- CHOW established Chow Energy PCL. (CEPL) to operate business as a Holding Company with a policy to make investment in renewable energy business which bears low risk and has high growth potential in line with the rising awareness of the importance of renewable energy and ensure the country's energy security. CEPL and subsidiaries have engaged in renewable energy business focusing on investing in and provision of services in relation to solar power plants both at home and overseas.

Key Development of Company

FEB 2020	COD solar plant in Japan "Nihonmatsu 3", 1.48 MW, which makes the company holds 9 projects total capacity of 68.60 MW
SEP 2019	COD solar plant in Japan "Aomori", 7.21 MW, which makes the company holds 8 projects total capacity of 67.12 MW
MAR 2019	Sell 4 solar power plants, 5.38 MW, to Infrastructure Funds in Japan
JAN 2019	Signing OEM Agreement to produce 400,000 Tons per year of Steel Billets

Revenue Structure

Period : 31 Mar

(Unit : MB)

	3M/2020	%	3M/2019	%	2019	%	2018	%
Revenues from sales and services	206.16	99.33	476.26	76.08	1,333.99	85.83	4,063.98	94.30
- Revenues from steel business	35.96	17.33	308.86	49.34	572.08	36.81	3,077.84	71.42
- Revenues from transportation business	2.85	1.37	1.18	0.19	8.62	0.55	4.30	0.10
- Revenues from renewable power business	167.35	80.63	166.22	26.55	753.29	48.47	981.84	22.78
Gain on sales of power plant projects	-	-	83.74	13.38	97.71	6.29	214.51	4.98
Gain on exchange	-	-	48.15	7.69	90.28	5.81	-	-
Other income	1.39	0.67	17.87	2.85	32.21	2.07	31.25	0.72
Total revenues	207.55	100.00	626.02	100.00	1,554.19	100.00	4,309.74	100.00

Business Plan

- The company have an important plan to improve the production process for more efficiency and develop the sales solution by signing OEM Agreement with new potential customer to produce Steel Billet 400,000 MT/year which can fully control the fluctuation of raw material price to turnaround the performance.
- The company continues to expand its renewable energy business by focusing on potential overseas projects for both of existing market and new market which give a worthwhile return.

Investment Highlight

2019	Invest in 3 solar power plant projects, with a total installed capacity of 172.80 MW in Australia
2019	Signing OEM Agreement to produce 400,000 Tons per year of Steel Billets

Risk Factor

- **Risks of fluctuations in long steel prices** Long steel prices depend on the demand and supply within the construction industry, consumer demand and domestic and international production abilities. According to this, the company develop the sales solution by signing OEM Agreement with new potential customer to produce Steel Billet 400,000 MT/year which can fully control the fluctuation of raw material price.
- **Risk from the efficiency and stability of solar power plants** such as the efficiency of the main equipment, losses in electricity generation or transmission system problems. So the company has monitored the operation of the power plant through Supervisory Control And Data Acquisition system (SCADA) which can be monitored 24 hours a day and can detect and solve problems that occur on time.
- **Risk from compliance with laws and regulations** The company has renewable energy business in Thailand and Japan which are governed by laws and regulations that may be modified or changed from the current version. However, the company has made the best effort to ensure that the company operations comply with laws and regulations, especially in Japan, the company hire Japanese legal firm to review and advise on compliance with relevant laws and regulations before investment.

Awards

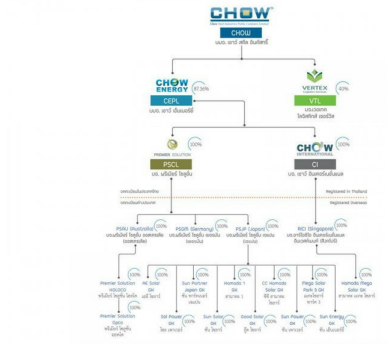
2019	Certified as a member of Private Sector Collective Action Coalition against Corruption (CAC) by Thai Institute of Directors (IOD)
2019	Received Silver Award "Happy PVD Company" by SEC
2019	Received an outstanding award of Thailand Labour Management Excellence Award 2019
2019	Green Mining Award 2019 and CSR-DPIM Continues Award 2019 from Department of Primary Industries and Mines
2018	CSR-DPIM Award 2018 from Department of Primary Industries and Mines
2018	Asia Responsible Entrepreneurship Awards 2018 in Investment in People

Capital Structure

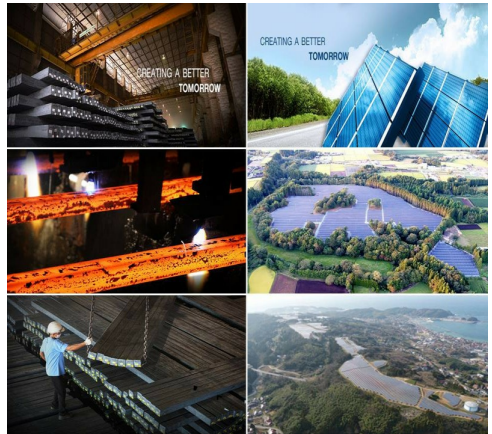
(Unit : MB)

	3M/2020	3M/2019	2019	2018
Current Liabilities	4,313.37	4,223.89	2,973.29	6,097.96
Non-Current Liabilities	5,601.13	5,448.42	6,159.61	5,657.10
Shareholders' Equity	923.92	1,285.77	1,035.79	1,324.84

Company Structure



Company Image



Disclaimer : This document is prepared by the listed company and aimed to disseminate company's information to investors for only investment decision support which do not aim to persuade company's securities trading. Investors should consider the above-presented information carefully for investment purpose. The Company shall not be responsible for any disadvantages may cause from using this information as investment decision. If investors require additional information, please find from disclosure information thru Form 56-1, Annual Report or information that disclosed via the Office of the Securities and Exchange Commission (SEC) and/or the Stock Exchange of Thailand (SET). The Company reserves the right to adjust this information without prior notice as well as the Company restricts any other to redo or copy or disseminate partial /all information to public without authorization